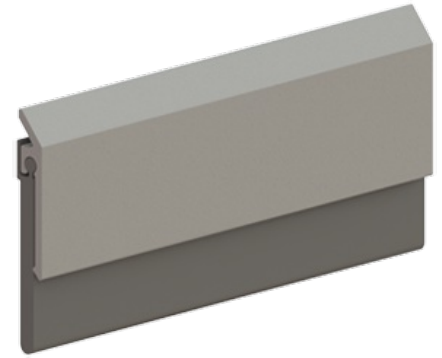


750S

Door Bottom Sweeps

Notes:

- MIL finish weatherstripping is supplied with zinc plated screws
- Color anodized weatherstripping is supplied with screws plated to match
- Stainless steel weatherstripping is supplied with stainless steel screws



PRODUCT SPECIFICATIONS

FINISHES:

- DBA, GLD, CLR, 32D

INSERTS:

- N=Neoprene (EDPM)
- S=Silicone

CATEGORY:

- J

FASTENERS:

- #6 x 5/8" Pan head sheet metal screws furnished with mortise types.

SIZE:

- Width: 1/4" (6 mm) Strip height: 1/2" (13 mm)