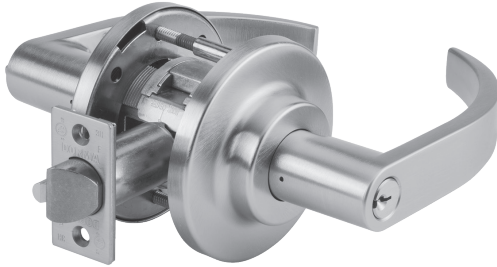


DORMA C800 SERIES LOCKSETS



LC Lever with E Rose

Applications

DORMA's heavy duty Grade 1 cylindrical locksets are especially suited for educational, health care, institutional, commercial and industrial applications. The broad range of functions and designs fulfill all cylindrical lock applications.

Certifications

- ANSI/BHMA A156.2 Grade 1 certified.
- UL and CUL listed.
- Meets ANSI A117.1 and ADA for barrier-free accessibility.
- CSFM approved.



Features

- All DORMA C800 Series locks feature advanced design concepts for extreme reliability and are manufactured with the finest materials for exceptional durability.
- To ensure exceptionally smooth operation, the C800 Series locks with lever trim incorporate a cast stainless steel retractor combined with roller bearings. This design provides both extremely high strength and an extended service life for the lock mechanism.
- DORMA C800 Series locksets are easy to install in both wood and hollow metal doors with ANSI/BHMA Standard A156.115 preparations for cylindrical locks.
- All C800 Series lever locks are through-bolted for additional strength and reliability.
- All C800 Series operating lever trim features a specially designed freewheeling function to protect the lock from damage caused by excessive torque applied to the lever handles. When locked, the outside lever handle will move freely through a 60° arc without operating the latch bolt. This free movement minimizes the opportunity for damage to the lock mechanism.
- All C800 Series lever handle locks include a special, high-strength spring and positive stop to eliminate unsightly sagging levers.
- All C800 Series lever locks are easily adjustable to accommodate doors from 1-3/4"-2-1/4" thick without spacers (1-3/8"-1-3/4" with spacers 660005). Consult the factory for other thicknesses.
- C800 Series knob locks will accommodate doors from 1-3/8"-2" thick without spacers or special tools.

- All C800 Series locks are available in the following backsets: 2-3/4" (70 mm) standard, 2-3/8" (60 mm), 3-3/4" (95 mm), and 5" (127 mm)

Cylinders and Keying

- Unless otherwise specified, cylinders will be provided in DORMA standard keyway with two (2) nickel silver keys.
- Optional patented key system available.
- Refer to separate DORMA Price List for full details and options such as master keying, retrofit cylinders and keyways, and small format and full size interchangeable cores.

Finishes

- Brass: 605 PVD (Bright), 606 PVD (Satin) or 605* (Bright, Clear Coated)
- Bronze: 612 PVD (Satin) or 613 PVD (Dark Oxidized Satin)
- Nickel: 619 PVD (Satin)
- Chrome: 625 (Bright) or 626 (Satin)
- Stainless: 630* (Satin)

NOTE: Consult factory for finishes not shown.

*Available on knob locksets only.

Exposed Trim

Brass or stainless steel—levers are pressure cast zinc, plated to match finish symbols.

Antimicrobial Protected Coating

Specify **AM**

Special Finish Notes

ANSI/BHMA A156.18 standards describe 613 Dark Oxidized Satin Bronze finish as a category B finish. B category finishes, "do not match from one alloy or form of material to the next and from

one manufacturer to the next." The 613 finish may vary between manufacturers' products and models.

In some instances, for customer convenience, the most appropriate BHMA finish symbols are used to indicate similarity of appearance, regardless of base metal or finishing process. Finishes of latches, strikes, cylinders/cores, and visible mounting screws, though similar in appearance, may differ from the finish of the trim. Finish designations in the 600 numbers are the BHMA (Builders Hardware Manufacturers Association) industry standard.

Security Screws

Torx® tamper-resistant screws are available for all exposed screws. Specify **TX**.

Warranty

For details, refer to **DORMA Limited Warranty** on our website at go.dorma.com/terms.

DORMA USA quality and environmental management systems in Reamstown, PA and Steeleville, IL are certified to ISO 9001:2008 and ISO 14001:2004.

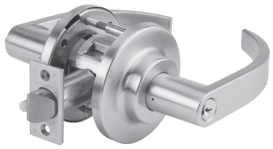


Intertek

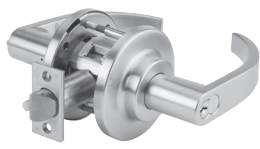


Intertek

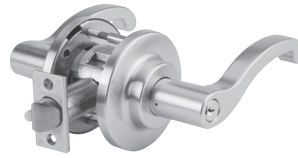
C800 lever locks shown with E Rose



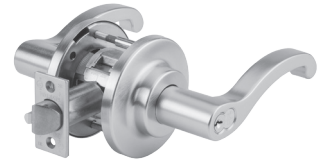
C800LCE



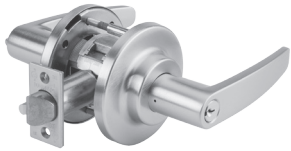
C800LCE IC



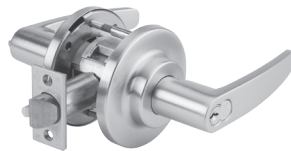
C800LFE



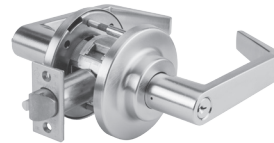
C800LFE IC



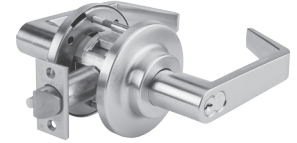
C800LGE



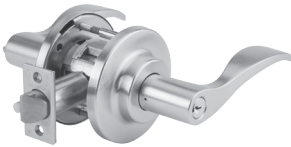
C800LGE IC



C800LRE



C800LRE IC



C800LVE



C800LVE IC

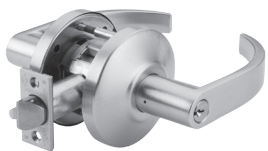


C800LTE

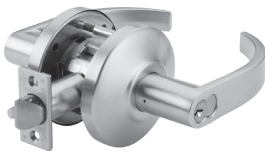


C800LTE IC

C800 lever locks shown with C Rose



C800LCC



C800LCC IC



C800LFC



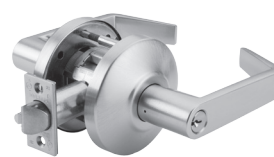
C800LFC IC



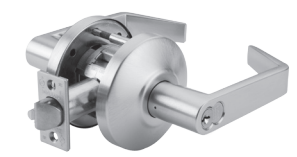
C800LGC



C800LGC IC



C800LRC



C800LRC IC



C800LVC



C800LVC IC



C800LTC



C800LTC IC

C800 knob locks with B Rose



C800KBB



C800KBB IC



Functions

ANSI	DORMA	Description
F75	C810*	Passage
F89	C812	Exit
F111	C825	Exit/communicating passage
F77	C830	Patio
F76	C840*	Privacy, bedroom or bath
—	C844	Hospital privacy
F112	C848	Exit/communicating storeroom
F82	C850	Office/entry
F109	C853*	Entry
F92	C855	Service station
F88	C860	Apartment
F113	C865	Exit/communicating classroom
F91	C866	Store door
F84	C870*	Classroom
F80	C872	Communicating
F90	C873*	Corridor
F110	C877	Classroom intruder
F86	C880	Storeroom
F87	C882	Asylum
F93	C885	Faculty restroom/hotel
—	C880EL	Electrically locked (fail safe)
—	C880EU	Electrically unlocked (fail secure)
—	C801*	Single dummy
—	C802	Double dummy

*Function available with knob locks

DORMA USA, Inc.
 Dorma Drive, Drawer AC
 Reamstown, PA 17567
 Tel: 800 523 8483
 Fax: 800 274 9724
 www.dorma.com