

## MacPro® Five Knuckle Standard Weight Series

The MacPro line offers contractor grade hinges to get the job done right. High quality MacPro hinges are an extraordinary value, ideal when you need large quantities of standard hinges.

- Plain bearing hinges are for standard weight doors only
- For standard weight doors with a closing device, MPB79 or MPB91 bearing hinge must be used
- MacPro templated hinges are made to conform to ANSI/BHMA 156.1, 156.7
- For available finishes consult the factory

No.	ANSI Cross Reference	Base Material	Weight	Bearing
MP79	A8133	Steel	STD	Plain Bearing
MPB79	A8112	Steel	STD	Bearing
MPB91	A5112	Stainless*	STD	Bearing

\*4 1/2" x 4 1/2"

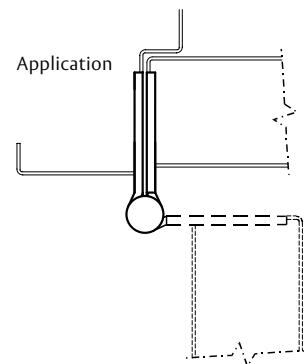
### Specifications

Inches	mm	Gauge	No. of Holes	Fasteners	
				Machine	Wood
4 1/2" x 4"	114.3 x 101.6	.134	8	1/2 x 12-24	1 1/4 x 12
4 1/2" x 4 1/2"	114.3 x 114.3	.134	8	1/2 x 12-24	1 1/4 x 12

MP79



MPB79  
MPB91



### Options:

Code	Description
NRP	Non-Removable Pin

### McKinney Hinge Pin Door Stop

- Recommended for high-use or high impact doors with MacPro MP79 & MPB79 hinges
- Protects against damage to doors and walls
- Runs the full length of the hinge

Part number	Description	Finish
76305	Hinge Pin Stop for MacPro MP79 & MPB79	26D
76306	Hinge Pin Stop for McKinney T2714 & TA2714	26D



# ASSA ABLOY

The global leader in  
FM-16 door opening solutions

800-346-7707 | [www.assaabloydooraccessories.us](http://www.assaabloydooraccessories.us)  
Check the web site for the up-to-date catalog

McKinney is a brand associated with ASSA ABLOY Accessories and Door Controls Group, Inc., an ASSA ABLOY Group company. Copyright © 2012-2018, ASSA ABLOY Accessories and Door Controls Group, Inc. All rights reserved. Reproduction in whole or in part without the express written permission of ASSA ABLOY Accessories and Door Controls Group, Inc. is prohibited.